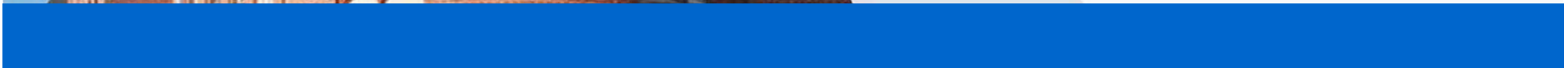


**CHARITÉ**  
UNIVERSITÄTSMEDIZIN BERLIN





since 2003 joint Medical School of



Freie Universität Berlin

and



Humboldt-Universität zu Berlin

# Charité – Universitätsmedizin Berlin



Campus  
Virchow-Klinikum



Campus  
Buch



Campus  
Charité Mitte



Campus  
Benjamin Franklin

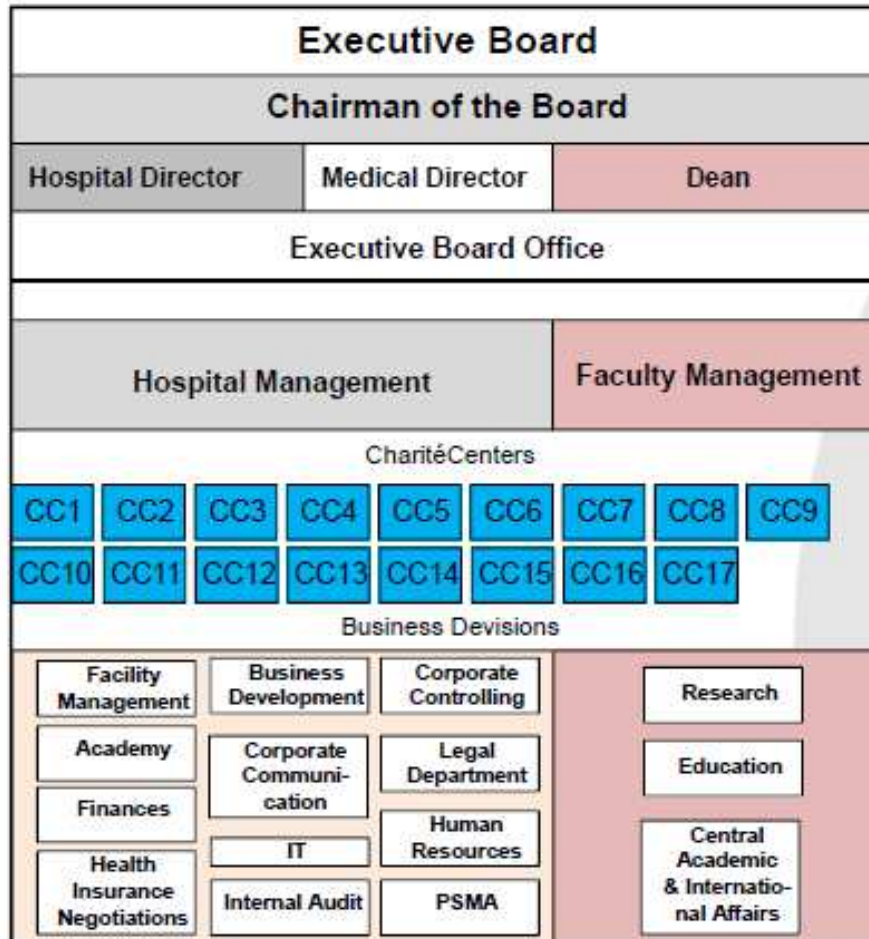
# Characteristics



- ▶ **Four campuses in Berlin with a total area of 532.000 m<sup>2</sup> (2012)**
- ▶ **One of the largest employers in Berlin**
- ▶ **11,604 employees (March 2013)**
  - ▶ among them **3,709** scientific and medical staff, **4,160** nursing staff, **776** administrative staff, **222** professors
- ▶ **6,832 students (2012)**
- ▶ **3,095 beds (2012), average length of stay of 6.39 days (2012) per case**
- ▶ **140,706 (2012) inpatient cases per year**
- ▶ **615,694 (2012) outpatient cases per year**
- ▶ **1.35 billion Euros annual turnover (2012)**



# Organisational Structure



## Spin-offs and Holdings

Charité Facility Management

CRO Charité Research Organisation

GDL Health Services

Charité Physiotherapy Prevention Services

Charité Outpatient Health Center

Laboratory Berlin - Charité Vivantes Services

Laboratory Berlin - Charité Vivantes

# Research

**189 million Euros** in subsidies for teaching and research

**154 million Euros** in third-party funding

- ▶ 6 Projects of Excellence Initiative / 3 Projects of Excellence Ini. (Coordinator)
- ▶ 15 Collaborative Research Area / 9 Collaborative Res. Area (Coordinator)
- ▶ 4 DFG Doctoral Programs
- ▶ 6 Research Groups
- ▶ 4 Clinical Research Groups
- ▶ 3 BMBF Competence Networks

## Research Focal Point

- ▶ Neurosciences
- ▶ Immunology / Transplantology / Infectious diseases
- ▶ Oncology
- ▶ Pneumonology
- ▶ Cardiovascular diseases / Kidney diseases
- ▶ Genetics and Genomic sciences
- ▶ Musculoskeletal diseases and injuries

# Education



## Basic study courses / Medical School

- ▶ Medicine, regular track  
12 semesters +3 months
- ▶ Medicine, model track (since WS 2010/11)  
12 semesters + 3 month
- ▶ Dentistry  
10 semesters + 6 months
- ▶ Health Science  
6 semesters

## Postgraduate study courses

- ▶ Cerebrovascular Medicine
- ▶ Consumer Health Care
- ▶ International Health
- ▶ Medical Neurosciences
- ▶ Molecular Medicine
- ▶ Toxicology
- ▶ Applied Epidemiology
- ▶ Epidemiology
- ▶ Public Health
- ▶ Health Professions Education
- ▶ European Master in Nursing Science

# History of the Charité



- ▶ In **1710** King Friedrich I. founded the Charité as a quarantine house for plague patients. In the following years, it became a military hospital where sick citizens and soldiers received free treatment.
- ▶ At the time the Berlin University was founded in **1810** the Charité was already a famous hospital and a renowned research and teaching institution.
- ▶ In the course of the reunification in **1997**, the Charité merged with Virchow-Klinikum. In **2003**, the Charité, as the medical school of the Humboldt University of Berlin, merged with the Benjamin Franklin medical school of the Free University of Berlin to become Charité – Universitätsmedizin Berlin as a corporate body of the two universities.
- ▶ In **2010** the Charité celebrated its 300th anniversary.